



2035 - THE EDGE AI REVOLUTION: WHEN 80% OF AI MIGRATES TO THE EDGE

From centralized AI to distributed intelligence:
Technologies, Markets and Strategic Issues 2020-2035

Target Sectors

Industry 4.0, Healthcare, Smart Cities, Automotive,
IT & Telecom, Retail, Agriculture, Energy & Utilities




Author

Yannick Gablin

Director – MEA / Digital Services

ALVAREZ & MARSAL

CONFIDENTIAL – NOT FOR DISTRIBUTION



**SECTION 8 –
EXECUTIVE SUMMARY**

Edge AI : \$357 Billion (80% of the Market by 2035), 8 Sectors transformed

Strategic framework for the evolution from Cloud AI to Edge AI (2020–2035)



5 Reasons why Edge AI will dominate the Cloud by 2035

80% of workloads will migrate to the edge: 5 Strategic Insights



Cloud Edge Transition →
80% Edge / 20% Cloud

Major paradigm shift for real-time workloads by **2035**. The Edge becomes the center of gravity of critical inference.

2035 HORIZON



Edge AI Market Growth
\$357 billion in 2035 (80% of the AI market)
 ↑ Average CAGR 27.7% (vs \$24.0 billion in 2025)

Sustained growth over the decade **2025-2035**, peaking at 34% in 2029 (BCC Research). Reaches 80% of the total AI market share by 2035.

HYPER-GROWTH



ROI Outperformance
ROI 2.0x vs Cloud
 285% (Edge) vs 145% (Cloud) • Return 4.2 months

Edge AI delivers superior immediate business value, particularly in Industry 4.0 (320%) and Automotive (280%).

OPERATIONAL EFFICIENCY



Explosion M&A Edge AI
250+ Deals in 2035
 Valuation \$125 billion • Edge overtakes Cloud in 2031

The volume and value of Edge AI transactions will surpass those of Cloud AI, marking the maturity and consolidation of the industry.

MARKET CONSOLIDATION



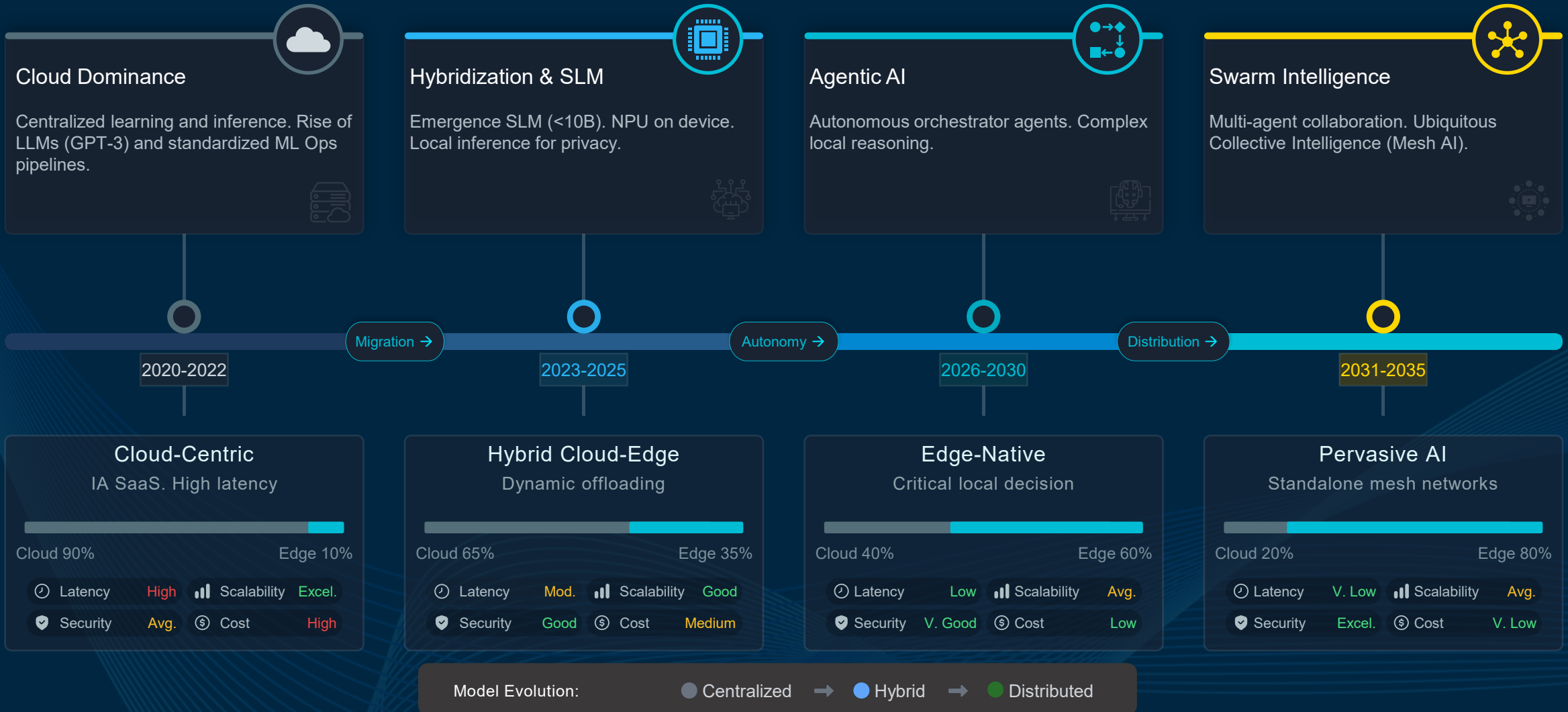
Agentic AI Revolution
+\$450-650 billion
 2030 Total economic impact generated, separate from the technology investment • -50% Ops costs

The emergence of Swarm Intelligence and Edge autonomous agents will create massive economic value via cognitive automation.

TECHNOLOGICAL FUTURE

From centralization to omnipresence : 15 years of global transformation

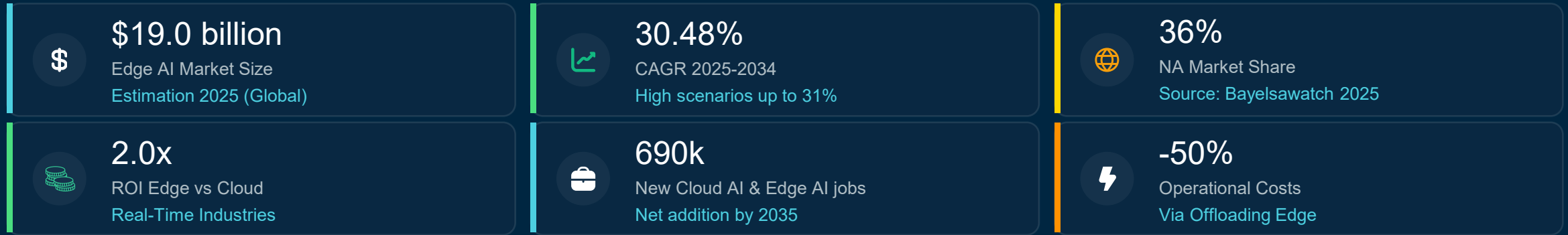
Evolution of architectures: from centralization to distributed and pervasive intelligence



2025-2026 data : sources and methodology of the analysis

Consolidated market data 2025-2026 and bibliographic references

Market Indicators 2025-2026



Main Sources & References

Market Research

- [Precedence Research](#) (2024) Edge AI Market Size & Growth Forecast.
- [IDC](#) (2024) Worldwide Edge Spending Guide.
- [Spherical Insights](#) (2024) Edge AI Market Analysis 2033.
- [Grand View Research](#) (2025) Edge Computing Outlook.
- [The Business Research Co.](#) (2025) AI Infrastructure Report.

Strategic Consulting

- [McKinsey & Company](#) (2025) "Empowering Industries with Agentic AI".
- [McKinsey Insights](#) (2024) The Next Decade of AI (2025-2035).
- [Deloitte](#) (2025) Tech Trends: The Spatial Web & Edge.
- [Gartner](#) (2024) Hype Cycle for Edge Computing.

M&A & Valuations

- [PWC](#) (2025) "Global M&A Trends in AI".
- [BCG](#) (2026) "M&A Outlook: High Expectations".
- [Morgan Stanley](#) (2026) "5 Forces Driving M&A".
- [Finerva](#) (2026) "Robotics & AI Valuation Multiples".
- [Lazard](#) (2025) "M&A Review & Outlook".

Government

- [NIST](#) (2024) AI Risk Management Framework.
- [US Dept. of Transportation](#) (2023) Smart City Data.
- [US Dept. of Energy](#) (2025) Smart Grid Report.
- [European Commission](#) (2024) EU AI Act Guidelines.

Organizations Int.

- [ITU](#) (2024) AI for Good: Edge in Developing Nations.
- [IEA](#) (2024) Digitalization & Energy Efficiency.
- [WHO](#) (2024) Ethics & Governance of AI.
- [World Econ. Forum](#) (2025) Future of Compute.

Tech Industry

- [Premio Inc.](#) (2024) Edge LLMs vs Cloud LLMs.
- [Clarifai](#) (2024) Edge vs Cloud AI: Hybrid Future.
- [Siemens](#) (2025) Industrial AI & Agentic Future.
- [NVIDIA](#) (2024) Edge Computing Solutions.

Jobs & Talents


- [PwC](#) (2025) "Global AI Jobs Barometer".
- [LinkedIn](#) (2025) "AI Talent Insights".
- [Gartner](#) (2024) "AI Workforce Upskilling".
- [JP Morgan](#) (2025) "AI Impact on Jobs".
- [BLS](#) (2025) "AI impacts in projections".
- [Deloitte](#) (2025) "Workforce Evolution".



LEADERSHIP. ACTION. RESULTS.SM

ALVAREZ & MARSAL

CONFIDENTIAL – NOT FOR DISTRIBUTION

Alvarez & Marsal Holdings, LLC. All rights reserved. ALVAREZ & MARSAL®,  and A&M® are trademarks of Alvarez & Marsal Holdings, LLC.

© Copyright 2026

