

Medicaid, Health and Human Services



How are you preparing for potential Medicaid changes from Congress?

How are you implementing requirements in recent federal regulations?

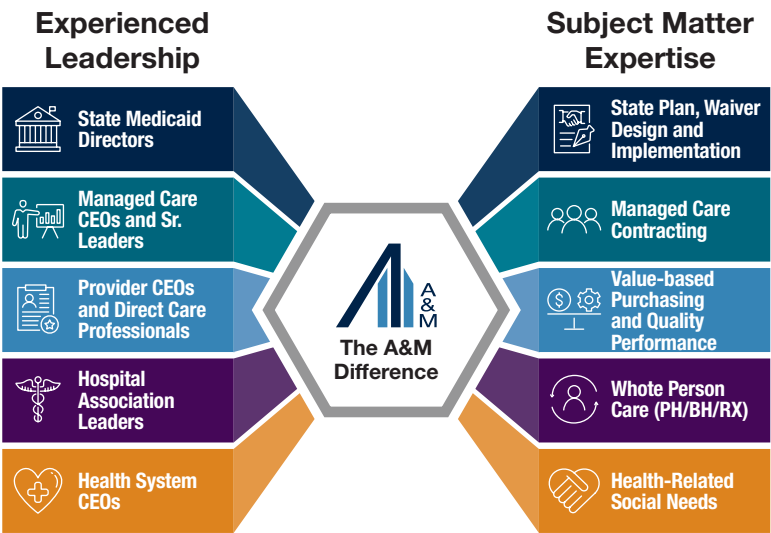
How is your value-based payment model progressing?

How are your MCOs performing?

*Alvarez & Marsal (A&M) helps Medicaid and related state agencies **assess, stabilize, and transform** programs that provide physical health, behavioral health, health related social needs, pharmacy benefits, and long-term services and supports.*

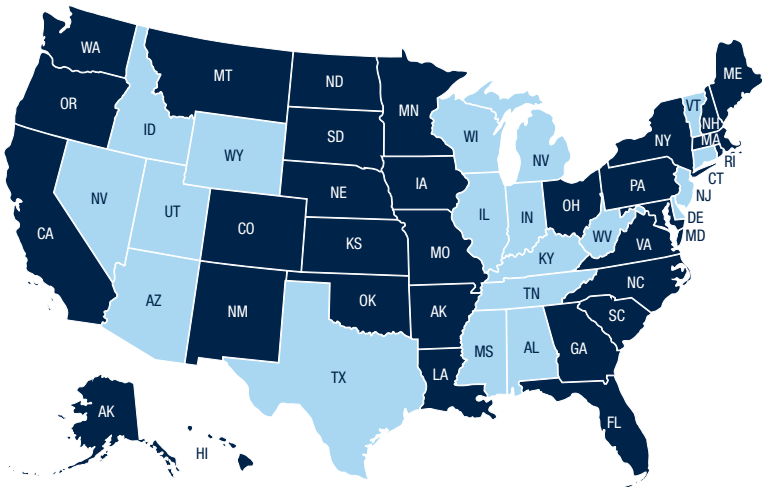
The A&M Difference:

Our leaders are recognized experts in person-centered practices and these values are instilled across our staff. A&M partners with state agencies to plan, implement, execute, evaluate and refine. We build a stronger, sustainable foundation to have a positive and meaningful impact on the lives of constituents.



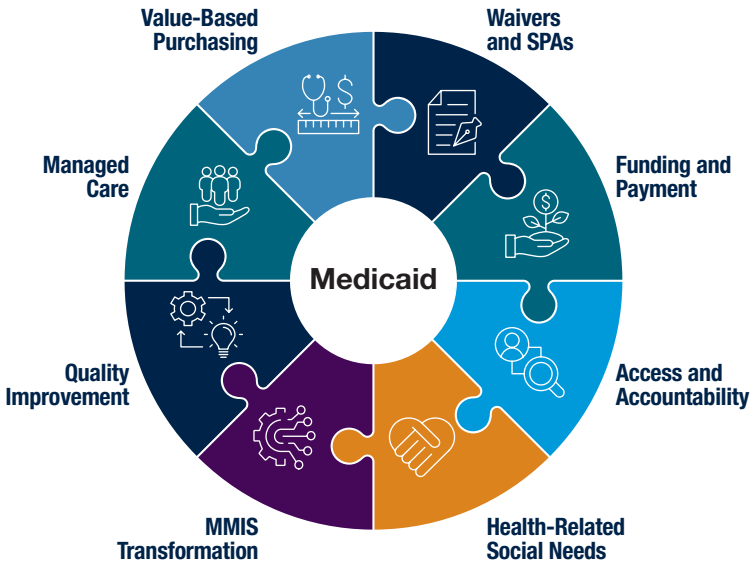
Our Impact | Recent Public Sector Engagements:

Since 2003, A&M has partnered with 32 states and D.C. to drive healthcare transformation, safeguard vulnerable populations, and improve overall well-being.



Our Core Medicaid Offerings:

Customized, client-focused solutions to support Medicaid and related state agencies in executing critical initiatives focused on program design, development operations, and implementation to improve outcomes, manage costs, and enhance functional efficiency.



Case Study | Georgia Public Health Emergency Unwinding

PROBLEM

A&M **ASSESSED** the state's readiness for the Public Health Emergency (PHE) Medicaid Unwinding after nearly three years of paused or significantly reduced operations. A&M identified opportunities, risks, and strengths in three categories:

- technology, automation, and policy;
- reduction of workloads; and
- transferal or alleviation workloads.

A&M coordinated and supported implementation of recommendations, compliance efforts, and other efforts as necessary.

APPROACH

A&M partnered with the Office of Planning & Budget, the Department of Human Services (the state's eligibility agency), the Department of Community Health (the state's Medicaid agency), and the Office of State Administrative Hearings (the state's appeals office). Team members engaged leadership to **STABILIZE** the PHE unwinding, promote collaboration, identify and resolve risks, and continuously improve processes, systems, and data integrity and reporting.

SOLUTION

A&M TRANSFORMED eligibility processes to include:

- Full compliance with CMS monthly reporting requirements to ensure full eFMAP.
- Increased data integrity and transparency regarding reporting and renewal outcomes.
- System enhancements implemented to increase ex parte renewals.
- Expansion of Express Lane Eligibility (ELE) for children.
- Increased collaboration regarding eligibility across agencies.

MEDICAID, HEALTH AND HUMAN SERVICES CONTACTS



MICHAEL HEIFETZ

MANAGING DIRECTOR

Washington, DC

mheifetz@alvarezandmarsal.com



CAITLIN THOMAS-HENKEL

SENIOR DIRECTOR

New York, NY

cthomas-henkel@alvarezandmarsal.com



HEATHER HUFF

SENIOR DIRECTOR

Phoenix, AZ

hhuff@alvarezandmarsal.com



KRISTI PLOTNER

SENIOR DIRECTOR

Houston, TX

kplotner@alvarezandmarsal.com

ABOUT ALVAREZ & MARSAL

Founded in 1983, Alvarez & Marsal is a leading global professional services firm. Renowned for its leadership, action and results, Alvarez & Marsal provides advisory, business performance improvement and turnaround management services, delivering practical solutions to address clients' unique challenges. With a world-wide network of experienced operators, world-class consultants, former regulators and industry authorities, Alvarez & Marsal helps corporates, boards, private equity firms, law firms and government agencies drive transformation, mitigate risk and unlock value at every stage of growth.

To learn more, visit: AlvarezandMarsal.com

Follow A&M on:



© 2025 Alvarez & Marsal Holdings, LLC. All Rights Reserved. 456914

ALVAREZ & MARSAL

LEADERSHIP. ACTION. RESULTS.SM